

Whatever
your question,
we're here to help



Marie
Curie

Care and support
through terminal illness

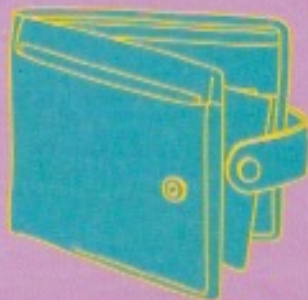
I've just found out I've
got a terminal illness.
How do I tell people?



Is it possible for my dad
to die at home?



I've had to quit my job.
How will I get by?



I feel so angry.
Is this normal?



Ask away

Via phone, email, social media and live chat

Whether you, a family member or a friend is affected by terminal illness, Marie Curie can help you with all the practical information and emotional support you need. Right from diagnosis and whenever you need us.

Our trained team, including nurses, can give you and your loved ones trusted information on everything from symptom management and day-to-day care, through to financial information, legal issues and bereavement support.

Call free **0800 090 2309***

Monday to Friday 8am to 6pm, Saturday 11am to 5pm

*Calls are free from landlines and mobiles. Your calls may be recorded for training and monitoring purposes.

Or visit our website mariecurie.org.uk/support for information that's clear and easy to understand, covering where to go for care and support, information on benefits, managing symptoms and planning ahead.

You can also have an online conversation with one of our trained staff, during Support Line opening hours.

Connect with our online community community.mariecurie.org.uk to get support from other people affected by terminal illness who understand what you're going through.



Care and support
through terminal illness

Who we are

We're here for people living with any terminal illness, and their families. We offer expert care, guidance and support, to help them get the most from the time they have left.

mariecurie.org.uk

 MarieCurieUK

 @mariecurieuk

Charity reg no. 207994 (England & Wales), SC038731 (Scotland) F576b